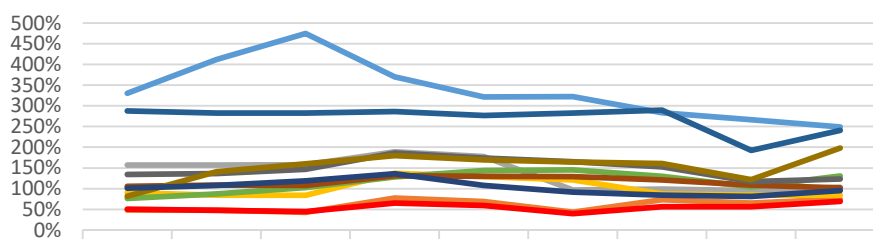


## Kinderarmut - Ausländer (%) / Kinderarmut - gesamt (%)



	2008	2009	2010	2011	2012	2013	2014	2015	2016
Bergisch Gladbach	331%	412%	475%	370%	321%	322%	284%	266%	249%
Duisburg	48%	48%	43%	77%	69%	43%	73%	65%	75%
Mülheim an der Ruhr	157%	157%	158%	189%	178%	96%	99%	95%	103%
Bergheim (BM)	90%	84%	84%	137%	129%	121%	87%	84%	84%
Gelsenkirchen	51%	48%	45%	65%	59%	40%	57%	57%	69%
Herne	76%	87%	102%	128%	143%	145%	130%	104%	131%
Rösrath	288%	282%	282%	286%	277%	282%	290%	192%	241%
Köln	106%	108%	108%	131%	130%	129%	121%	109%	102%
Leverkusen	134%	137%	147%	186%	174%	165%	153%	117%	123%
Gummersbach	82%	141%	160%	180%	170%	164%	160%	122%	198%
Bonn	101%	108%	119%	136%	108%	92%	84%	81%	95%

\*Datenlücken wurden zum Teil interpoliert

